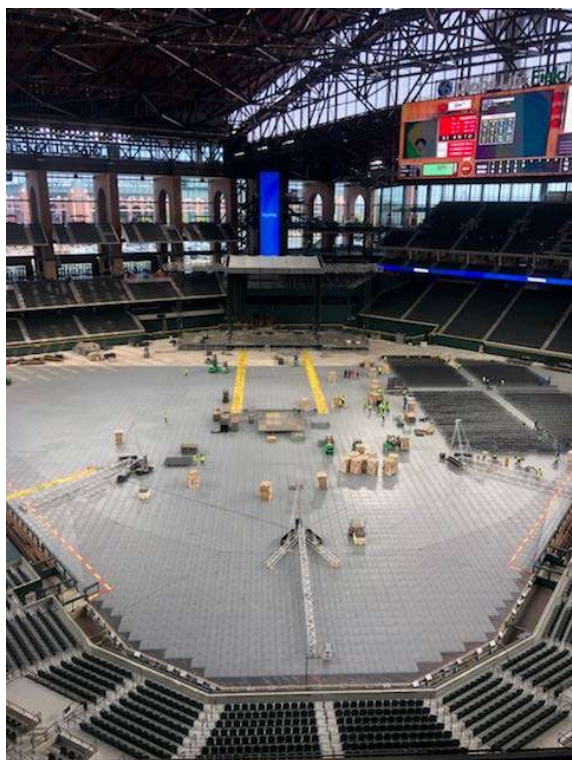
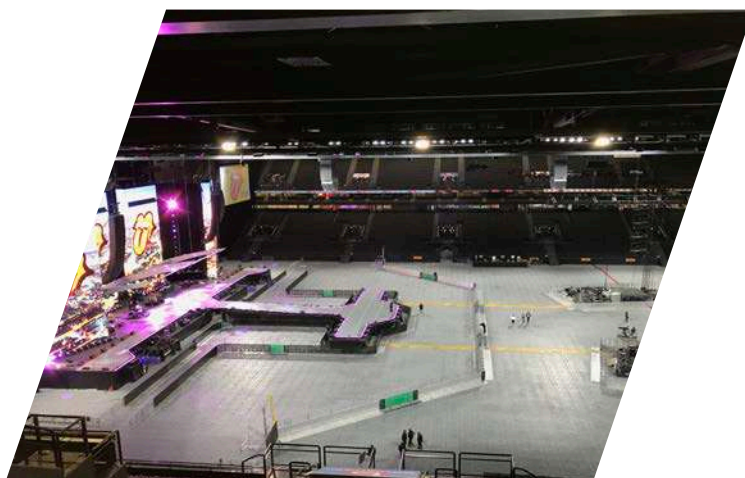


Facts about terratrak[®] plus-ID and FV

- STRONGEST1,130+ PSI - Certified
- LONGEST GUARANTEE ...10 years – incl. camlocks/bolts
- SAFESTCertified Non-Slip Surface
- PROVENPurchased by more National Stadiums Worldwide than all other products combined

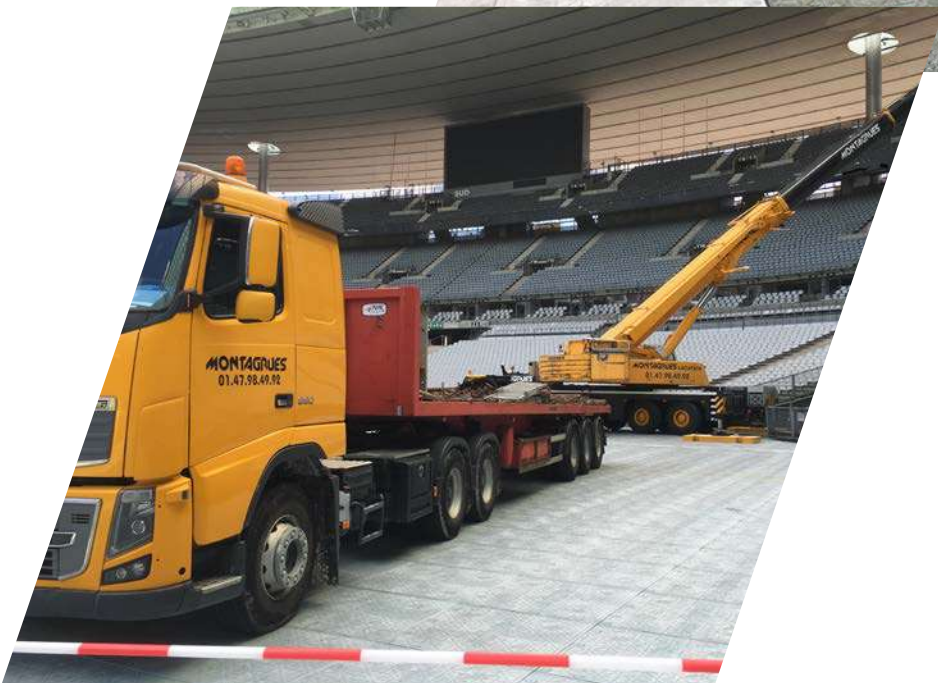
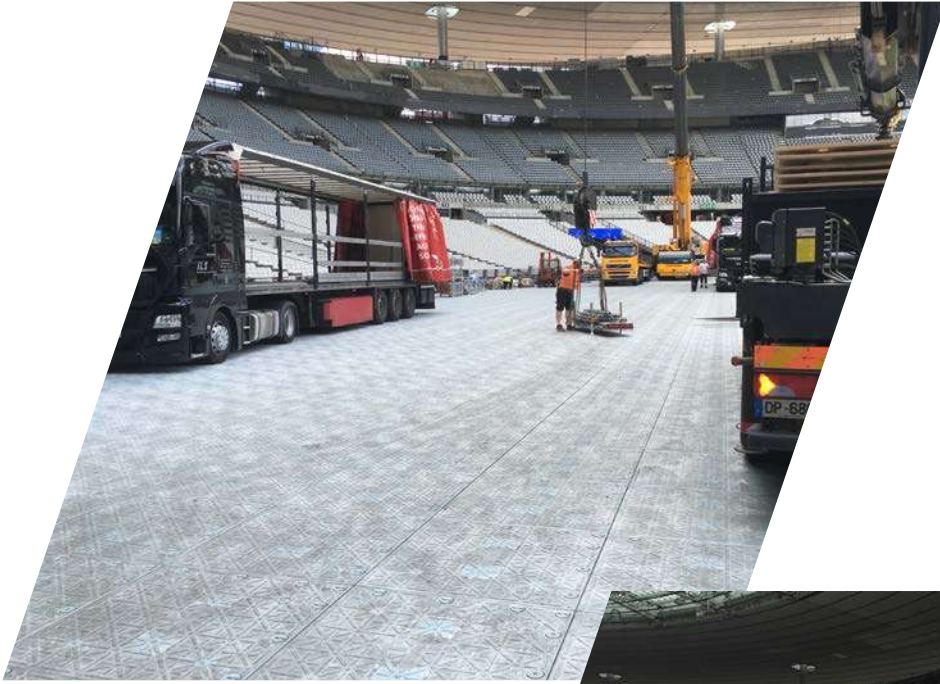


All **terratrak plus** products allow direct movement of very heavy loads, including fully loaded trucks, forklifts, 100 ton cranes etc into and out of the stadium for easy stage construction and movement of equipment, without damaging the field.



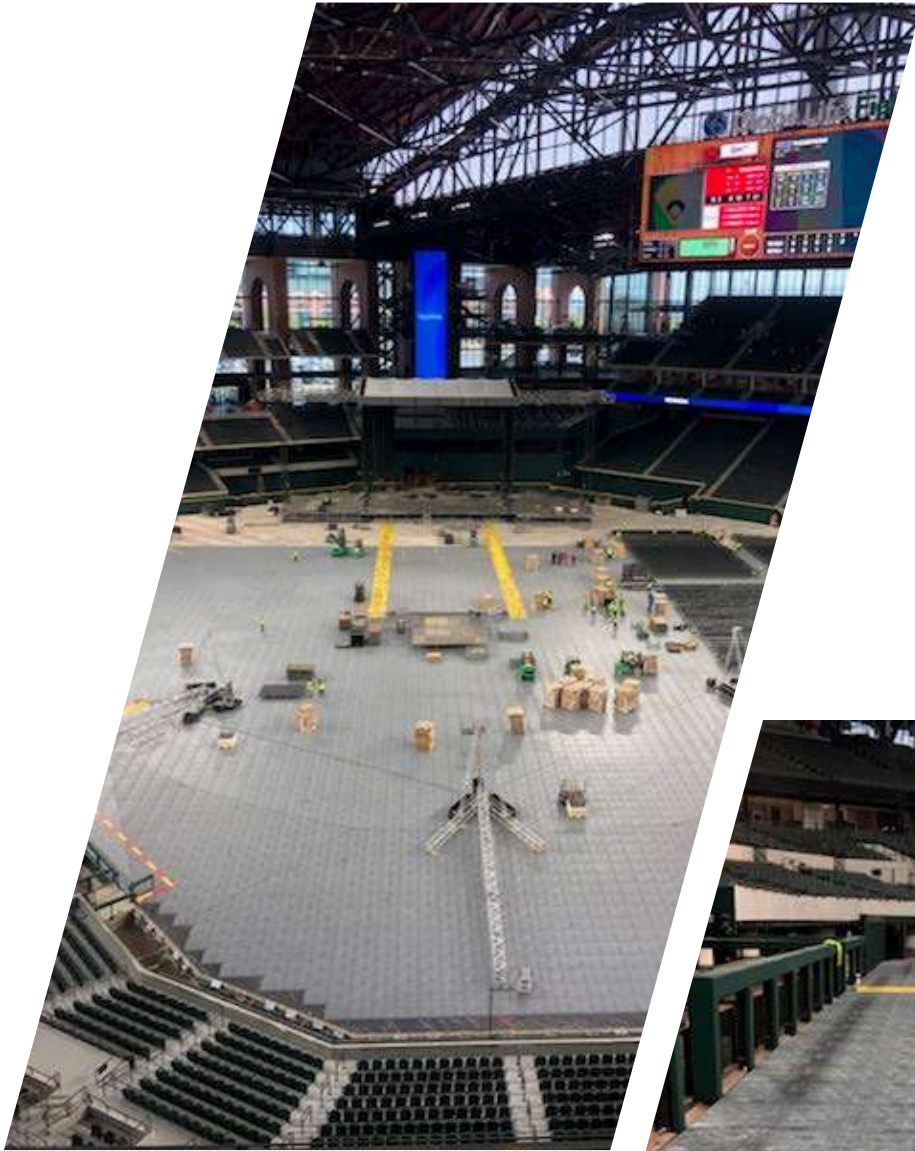
terrtrak[®] plus-FV

Stade de France



terratrak® plus-ID

Texas Rangers – Globe Life Field



terrtrak® plus-ID

Texas Rangers – Globe Life Field

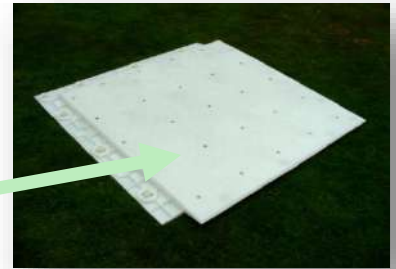


terrtrak[®] plus

SOLUTIONS SPECIFICATIONS



Top surface with integrated anti-slip



Completely flat underside

| | |
|---|--|
| Dimensions (Physical) | 1.2m (4') x 1.2m (4') x 38 mm (1½"). Bolted together in 2s at the factory and shipped on pallets. |
| Dimensions (Usable) | Each tile has a "Usable" top surface when fitted of 1.21m ² (13.02ft ²). Each bolted panel measures 1.1m(3'6")x 2.2m (7') 2.42m ² (26.05ft ²) "Usable". |
| Weight | 23kgs per tile/ 50.6lbs per tile 19kgs m ² /3.88lbs per ft ² Each bolted panel weighs 46kgs / 101lbs |
| Material | Virgin High Density Polyethylene. Fully recyclable (the strongest material available) |
| Method of Manufacture | Structural foam Injection moulded using a blowing agent, which produces an engineering foam moulding with strength enhancing cellular core |
| Temperature Range | -20°C to 60°C (-4°F to 140°F) |
| Weight Loading | kN per m² 7,800 PSI 1,130 lbf per ft² 163,000 |
| Fire Requirements | UL94 HB |
| Colour | Light Grey for surfaces that are not natural or hybrid grass |
| Cleaning | High pressure spray washer or Steam cleaner or special cleaning machine |
| Product Guarantee/ UV Guarantee/ Life Expectancy | 10 year Guarantee – including camlocks & bolts. 30 year UV Guarantee (UV additive products only) against UV degradation 20 year Realistic life expectancy |
| Slip Resistance | Integral slip-resistant surface (complies with all Health & Safety requirements – certification supplied) |
| Overlap | Full 100mm (4") Overlap, which increases its strength & holds the patented camlock/bolts. Plus it incorporates 'location bosses' for easy alignment for fitting that also act as stabilisers to resist twisting under duress. |
| Fitting Times | Due to its large panel size & locating 'bosses' it has the fastest laying time of any product available c. 1,000m ² per hour. To increase this speed bi-directional connectors are available, which can virtually double the amount of tiles fitted per hour. Access under the tiles can easily be gained by removing any pair of tiles |
| Shipping Information | UK 13.6m truck 1,000 tiles / 1,210m ² / 13,024ft ² 48ft truck (aluminium frame) 884 tiles / 1,070m ² / 11,517ft ² 40ft HC container 800 tiles / 968m ² / 10,420ft ² 20ft GP container 428 tiles / 518m ² / 5,576ft ² |
| Surfaces to protect | Natural & Hybrid Sports Turf / Artificial/Synthetic Turf / Athletics Tracks / Stripped Turf / other non-grass surfaces |

terrtrak[®] plus

EDGE RAMPS

To protect the public from trip hazards, **terrtrak** edge ramps have been specially designed to create a smooth transition from ground to tile system, while complying with all Health & Safety regulations.

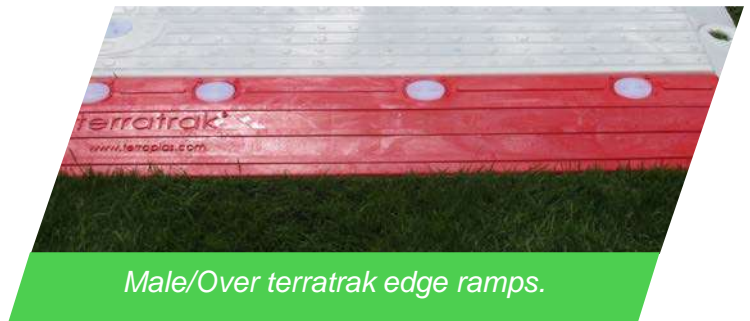


These ramps are available in red & yellow so that they can be fitted in alternating colours to ensure attention is drawn to the edges. The male and female formats allow each edge ramp to lock to its adjacent tile.

The edge ramps are manufactured with inbuilt 'bosses' so that where extremely heavy vehicular access is required, a base can be easily fitted to increase the strength even further.



Female/Under terrtrak edge ramps.



Male/Over terrtrak edge ramps.



Gain access to any area of terrtrak/terrtrak plus

using highly visible edge ramps for a smooth transition.
(compatible with all of the **terrtrak** product family)

SPEED IS OF THE ESSENCE!

Advanced Accessories from Terraplas – for an even faster turnaround

Fitting times are critical when formulating calendars for special events, meaning that the ability to lay the turf protection in multiple directions at the same time is vital, saving on labour costs while at the same time reducing the period the turf needs to be covered!!

Terraplas' unique multi-directional connectors minimise fitting times by allowing the Crews to start at the middle of the pitch and fit outwards in both directions simultaneously – with laying around mixer/delay towers quick and easy!



Female-Female



Male-Female



Male-Male

Bi-Directional connectors are available in translucent, or any colour to match the tile colour for use indoors.
*(compatible with all of the **terrtrak** product family)*

terrtrak[®] plus

FLEXI-ADAPTER

All plastic materials are by nature subject to expansion and contraction as a consequence of variations in temperature.

Whilst all Terraplas products are designed to accommodate the necessary 1mm per 10° temperature change, this adapter accommodates **up to 80mm additional** expansion/contraction, in each direction, allowing for the most **extreme** fluctuations in temperature.

Normally we recommend fitting Terraplas systems overnight, which means that the ambient conditions are more stable, reducing expansion/contraction.

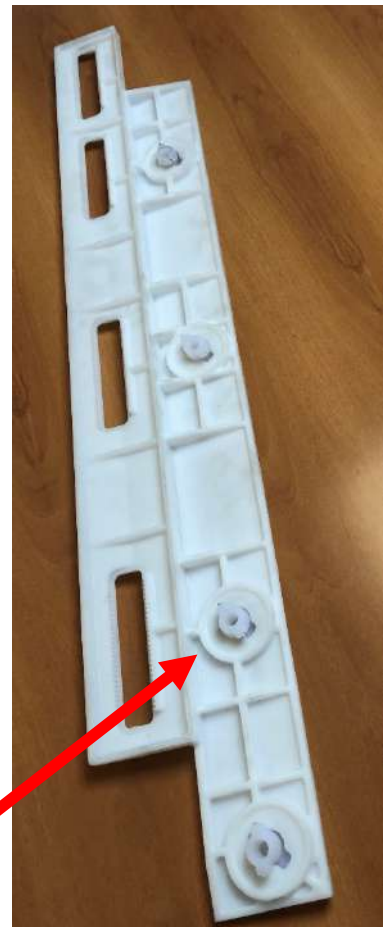
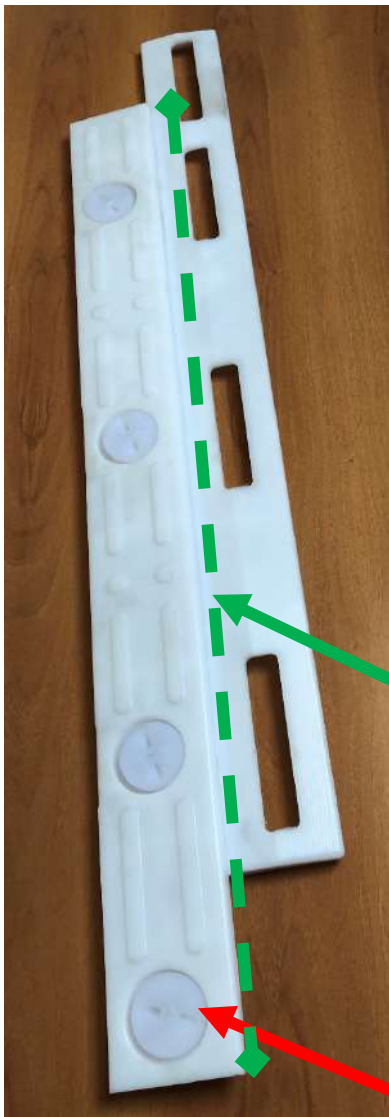
However, these unique flexi-adapters counter all fitting conditions – including misalignment during laying.

The flexi-adapters also facilitate the fitting of new tiles with older tiles where, inevitably, the lockability 'tightens' after a period of use.

The middle section of each unit measures 1.1 linear metre, to match terratrak[®] tiles

Underside.

Top showing special – male cams & female slots



Compatible with all of the terratrak product family



World's No.1 for *Turf Protection*

FOR FURTHER INFORMATION:

UK MAIN OFFICE:

The Barn, Hall Farm House, High Street,
Castle Donington, Derby. DE74 2PP UK

Tel: +44 (0)1332 812813

Email: contact@terraplas.com

www.terraplas.com